

GRAND HOTEL

RIMINI

★★★★L

Modular spaces and solutions



GRAND HOTEL RIMINI



SALA LEONARDO

SALA LUMIERE STEVENSON

SALA STEVENSON

SALA LUMIERE

SALA MEUCCI

SALA GALVANI

SALA MEUCCI GALVANI

SALA SYNCRON

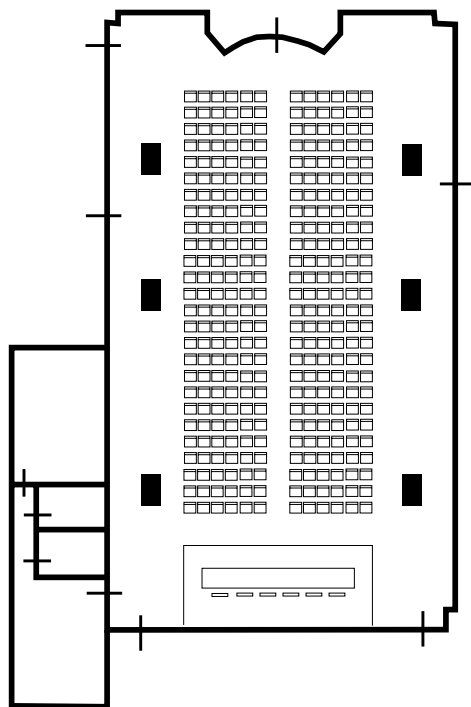
SALA MARCONI

SALA VIVALDI

HALL CENTRO CONGRESSI

SALA STAMPA

SALA LEONARDO



Superficie | *Size*

m² 324

Misure | *Measurements*

mt. 23,53x13,76

Altezza | *Height*

mt. 3,50/4,00

Piano interrato | *Basement*

Illuminazione artificiale | *Artificial light*

Cabina regia | *Technical room*

n.1

Cabina traduzioni | *Translation cabins*

n.2

Platea | *Theatre*

350 pax

Ferro di cavallo | *U shape*

60 pax

Tavolo Imperiale | *Boardroom*

80 pax

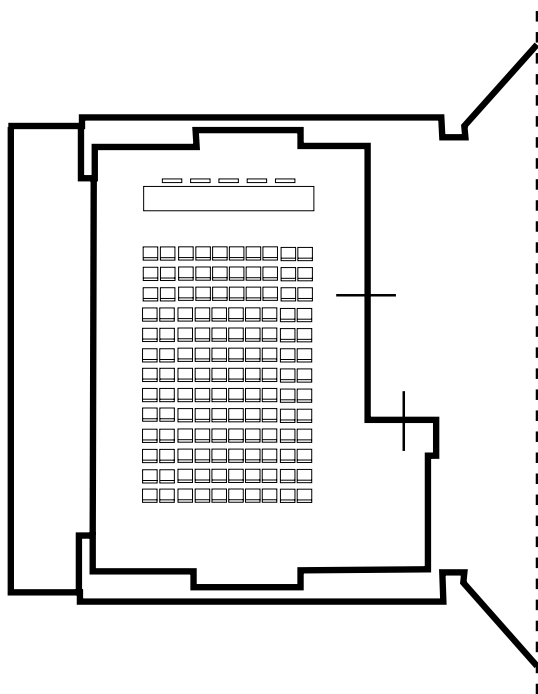
Banchi scuola | *Classroom style*

150 pax

Tavoli Rotondi | *Cabaret style*

90 pax

SALA LUMIERE STEVENSON



Superficie | *Size*

m² 68

Misure | *Measurements*

mt. 10,7x6,32

Altezza | *Height*

mt. 2,90

Piano primo | *1st floor*

Illuminazione naturale | *Daylight*

Platea | *Theatre*

70 pax

Ferro di cavallo | *U shape*

30 pax

Tavolo Imperiale | *Boardroom*

30 pax

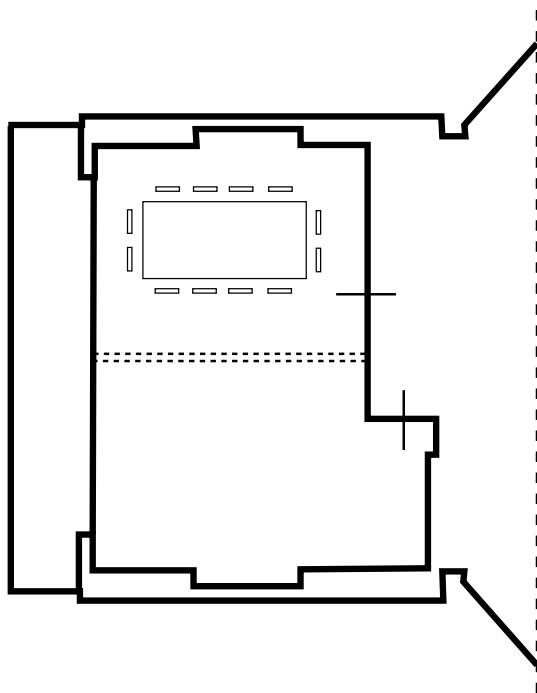
Banchi scuola | *Classroom style*

40 pax

Tavoli Rotondi | *Cabaret style*

30 pax

SALA STEVENSON



Superficie | *Size*

m² 34

Misure | *Measurements*

mt. 5,35x6,32

Altezza | *Height*

mt. 2,90

Piano primo | *1st floor*

Illuminazione naturale | *Daylight*

Platea | *Theatre*

20 pax

Ferro di cavallo | *U shape*

10 pax

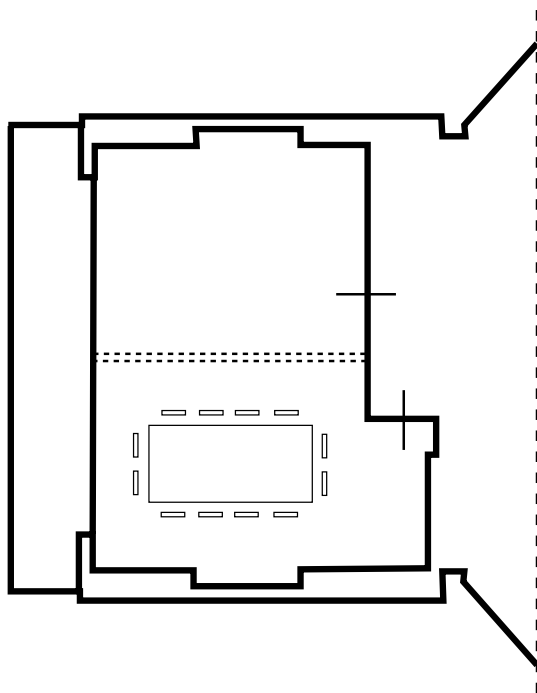
Tavolo Imperiale | *Boardroom*

15 pax

Banchi scuola | *Classroom style*

10 pax

SALA LUMIERE



Superficie | *Size*

m² 34

Misure | *Measurements*

mt. 5,35x6,32

Altezza | *Height*

mt. 2,90

Piano primo | *1st floor*

Illuminazione naturale | *Daylight*

Platea | *Theatre*

20 pax

Ferro di cavallo | *U shape*

10 pax

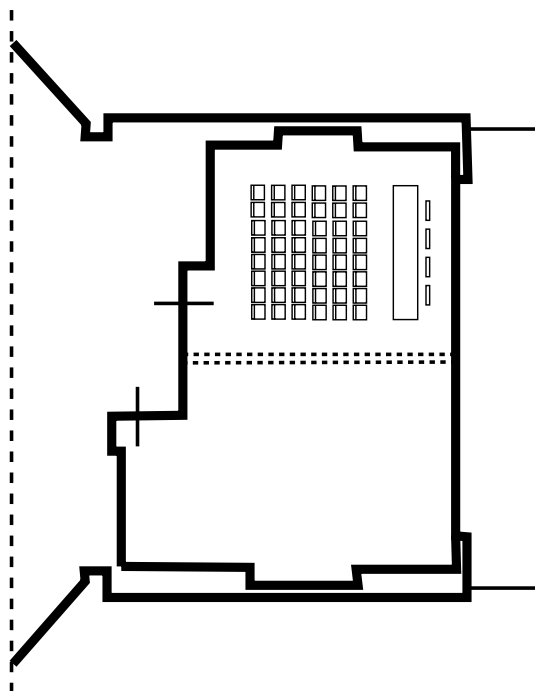
Tavolo Imperiale | *Boardroom*

15 pax

Banchi scuola | *Classroom style*

10 pax

SALA MEUCCI



Superficie | *Size*

m² 34

Misure | *Measurements*

mt. 5,35x6,32

Altezza | *Height*

mt. 2,90

Piano primo | *1st floor*

Illuminazione naturale | *Daylight*

Platea | *Theatre*

20 pax

Ferro di cavallo | *U shape*

10 pax

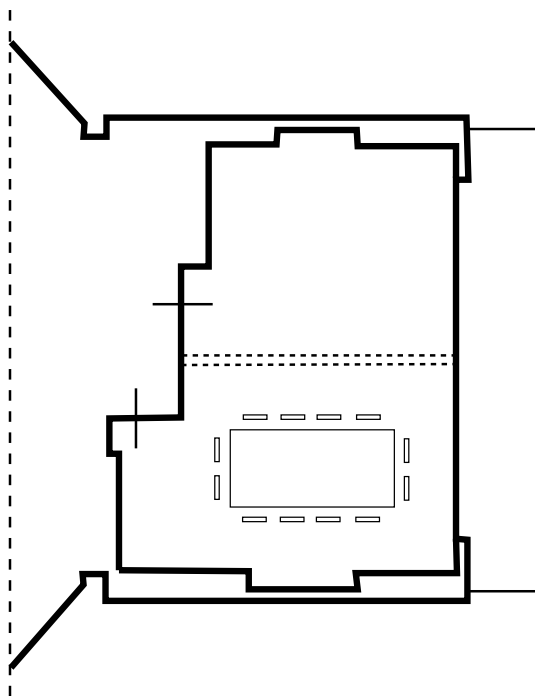
Tavolo Imperiale | *Boardroom*

15 pax

Banchi scuola | *Classroom style*

10 pax

SALA GALVANI



Superficie | *Size*

m² 34

Misure | *Measurements*

mt. 5,35x6,32

Altezza | *Height*

mt. 2,90

Piano primo | *1st floor*

Illuminazione naturale | *Daylight*

Platea | *Theatre*

20 pax

Ferro di cavallo | *U shape*

10 pax

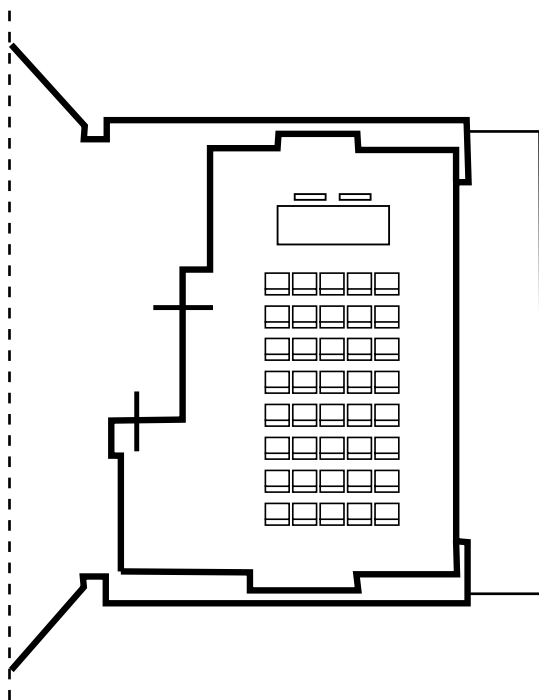
Tavolo Imperiale | *Boardroom*

15 pax

Banchi scuola | *Classroom style*

10 pax

SALA MEUCCI GALVANI



Superficie | *Size*

m² 68

Misure | *Measurements*

mt. 10,7x6,32

Altezza | *Height*

mt. 2,90

Piano primo | *1st floor*

Illuminazione naturale | *Daylight*

Platea | *Theatre*

70 pax

Ferro di cavallo | *U shape*

30 pax

Tavolo Imperiale | *Boardroom*

30 pax

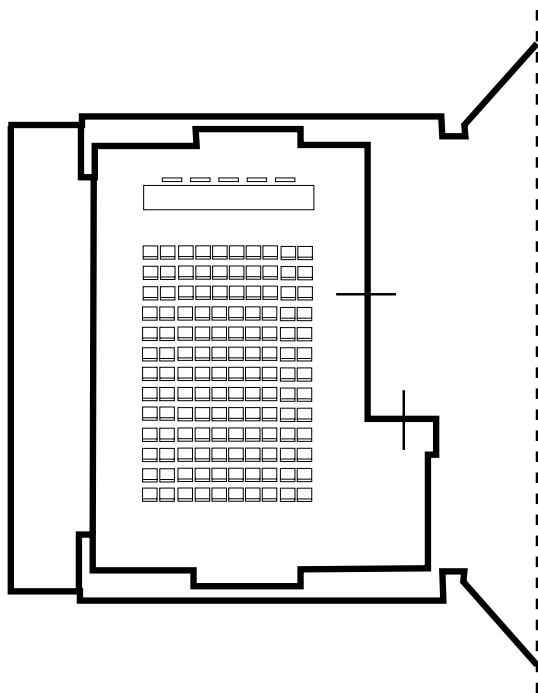
Banchi scuola | *Classroom style*

35 pax

Tavoli Rotondi | *Cabaret style*

30 pax

SALA SYNCRON



Superficie | *Size*

m² 69

Misure | *Measurements*

mt. 10,80x6,32

Altezza | *Height*

mt. 2,90

Piano secondo | *2nd floor*

Illuminazione naturale | *Daylight*

Platea | *Theatre*

70 pax

Ferro di cavallo | *U shape*

30 pax

Tavolo Imperiale | *Boardroom*

30 pax

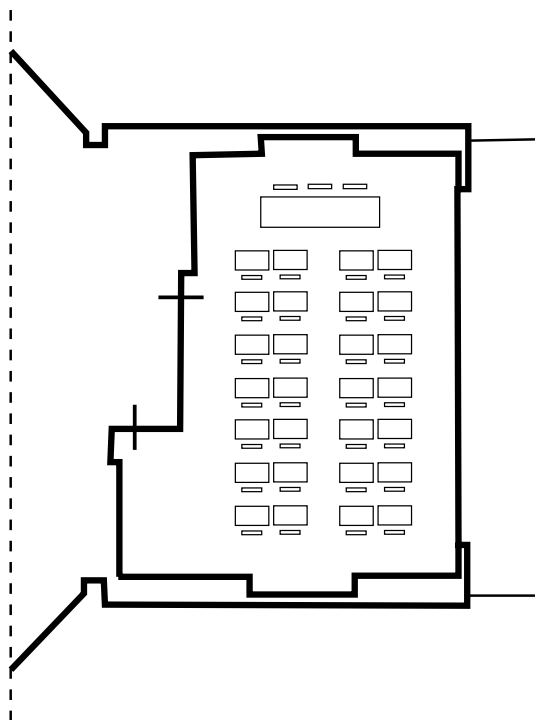
Banchi scuola | *Classroom style*

45 pax

Tavoli Rotondi | *Cabaret style*

30 pax

SALA MARCONI



Superficie | *Size*

m² 69

Misure | *Measurements*

mt. 10,8x6,32

Altezza | *Height*

mt. 2,90

Piano primo | *1st floor*

Illuminazione naturale | *Daylight*

Platea | *Theatre*

70 pax

Ferro di cavallo | *U shape*

30 pax

Tavolo Imperiale | *Boardroom*

30 pax

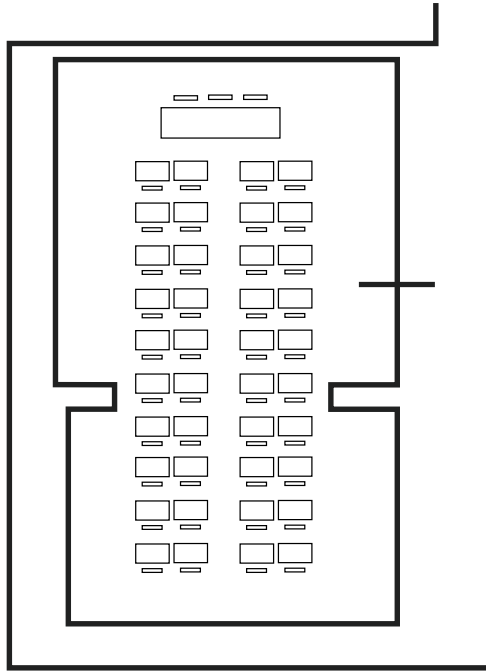
Banchi scuola | *Classroom style*

45 pax

Tavoli Rotondi | *Cabaret style*

30 pax

SALA VIVALDI



Superficie | *Size*

m² 65

Misure | *Measurements*

mt. 10,22x6,32

Altezza | *Height*

mt. 3

Piano terra | *Ground floor*

Illuminazione naturale | *Daylight*

Platea | *Theatre*

70 pax

Ferro di cavallo | *U shape*

25 pax

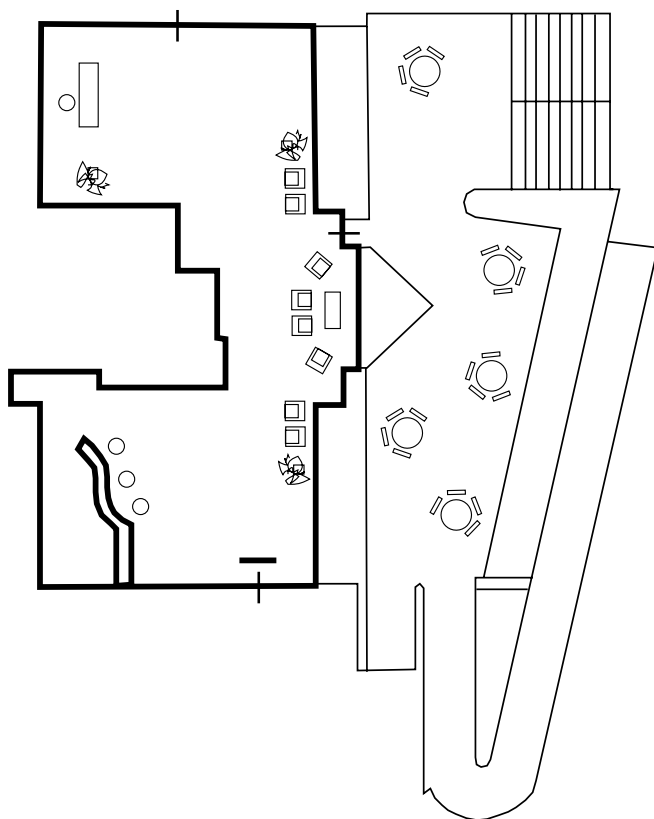
Tavolo Imperiale | *Boardroom*

25 pax

Banchi scuola | *Classroom style*

25 pax

HALL CENTRO CONGRESSI



Superficie | *Size*

m² 103

Altezza | *Height*

mt. 2,95

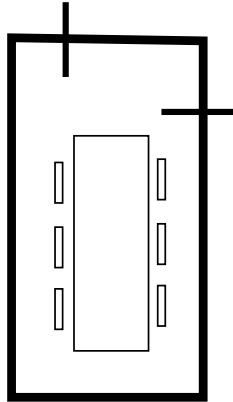
Piano terra | *Ground floor*

Illuminazione naturale | *Daylight*

Cocktail | *Cocktail*

100 pax

SALA STAMPA



Superficie | *Size*

m² 22

Misure | *Measurements*

mt. 6,4x3,47

Altezza | *Height*

mt. 2,70

Piano interrato | *Basement*

Illuminazione Artificiale | *Artificial light*

Tavolo imperioale | *Boardroom*

10 pax



BATANI

Select Hotels

MICE & EVENTS

BATANI SELECT HOTELS
Viale 2 Giugno, 34 - 48015 Milano Marittima (Ra) - Italia
Tel. +39 0544 977071- Fax +39 0544.971746
event@selecthotels.it - www.bataniselecthotels.it