

# ROMAGNA SLOW BIKE HOLIDAYS

OFFROAD



[www.selecthotels.it](http://www.selecthotels.it)  
[bike@selecthotels.it](mailto:bike@selecthotels.it)  
+39 0544 977071



# CERVIA - RAVENNA

ROMAGNA SLOW BIKE HOLIDAYS  
OFFROAD

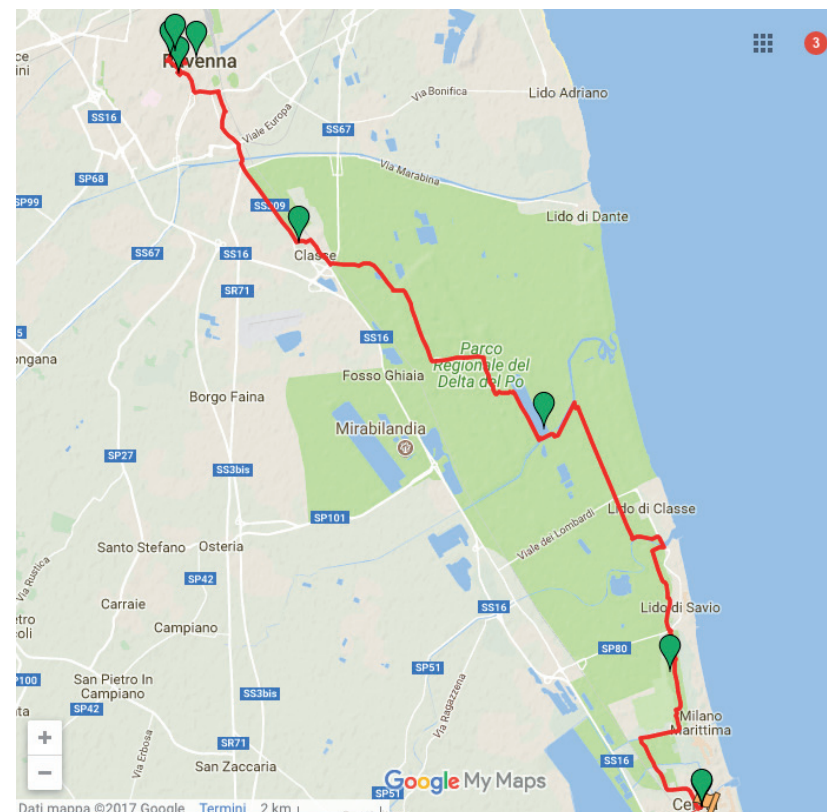
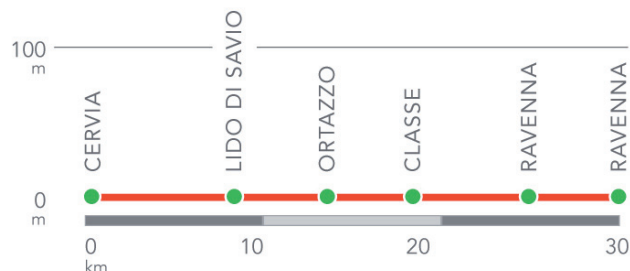
From ancient salt town to Byzantine capital, an itinerary through nature to discover the most famous mosaic site in the world going through its millenary pinewoods and the Ortazzo and Ortazzino Natural Reserve, the place with the highest biodiversity rate on the coastline in Romagna. After your arrival in the town an urban route will be proposed to discover the most representative mosaic sites. From Ravenna to Cervia with the possibility to return by train.

## **Not to be missed:**

*from Cervia, a route along a nature path, without cars or traffic, arrives at the Basilica di Classe, one of Unesco's heritage sites and most visited artistic site in Emilia Romagna in 2015.*

### INFO

km: 30  
difference in altitude: flat land  
bike: trekking bike  
track: paths through pinewoods,  
cycling paths, unpaved roads



## PLACES OF INTEREST

- Cervia:** Salt Museum, Salt Warehouses, Cervia Saltpans, Pinewood in Cervia  
**Classe:** Ortazzo and Ortazzino Natural Reserve, The Basilica of Sant'Apollinare in Classe  
**Ravenna:** The Neonian Baptistery, The Domus of the Stone Carpets, The Basilica of San Vitale and the Mausoleum of Galla Placidia, The Arian Baptistery



SELECTBIKEHOTELS



SELECTHOTELS.IT

WellnessValley  
ROMAGNA BENESSERE®



# CESENATICO - MOUTH OF THE BEVANO RIVER

ROMAGNA SLOW BIKE HOLIDAYS  
OFFROAD

Through the coastal pinewoods in Pinarella and Cervia to the natural mouth of the Bevano river and the Ortazzo Reserve, two jewels of biodiversity in the Delta del Po Park.

## **Not to be missed:**

*from the exuberant liveliness of a tourist resort, you can reach a place where nature is still paramount in a few kilometres.*

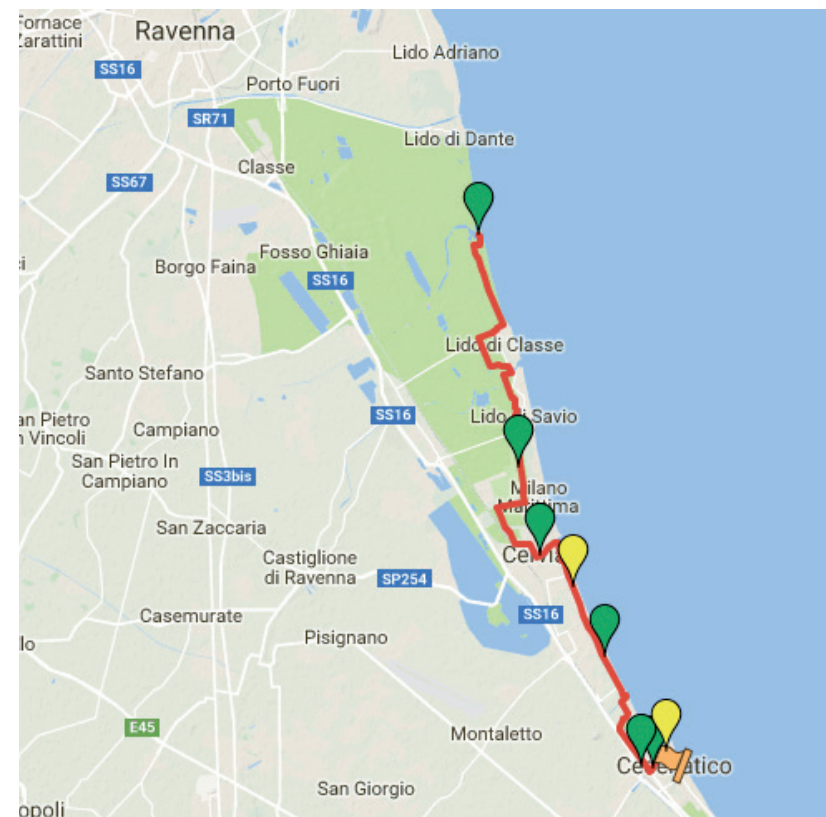
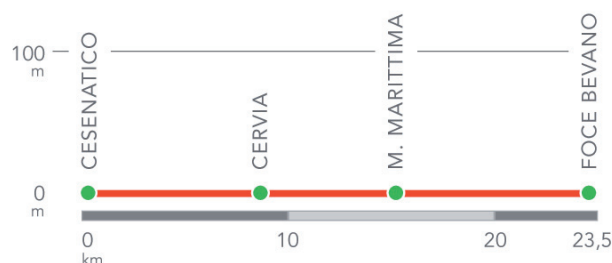
### INFO

km: 25,5

difference in altitude: flat land

bike: trekking bike

track: cycling paths, unpaved roads, pinewood paths



## PLACES OF INTEREST

**Cesenatico:** Leonardo da Vinci canal Harbour, Spazio Pantani

**Cervia:** Pinewood in Pinarella, Salt Warehouses, Pinewood in Cervia, The Bevano River Mouth Natural Reserve



SELECTBIKEHOTELS



SELECTHOTELS.IT



WellnessValley  
ROMAGNA BENESSERE®

# RIMINI - SANTARCANGELO

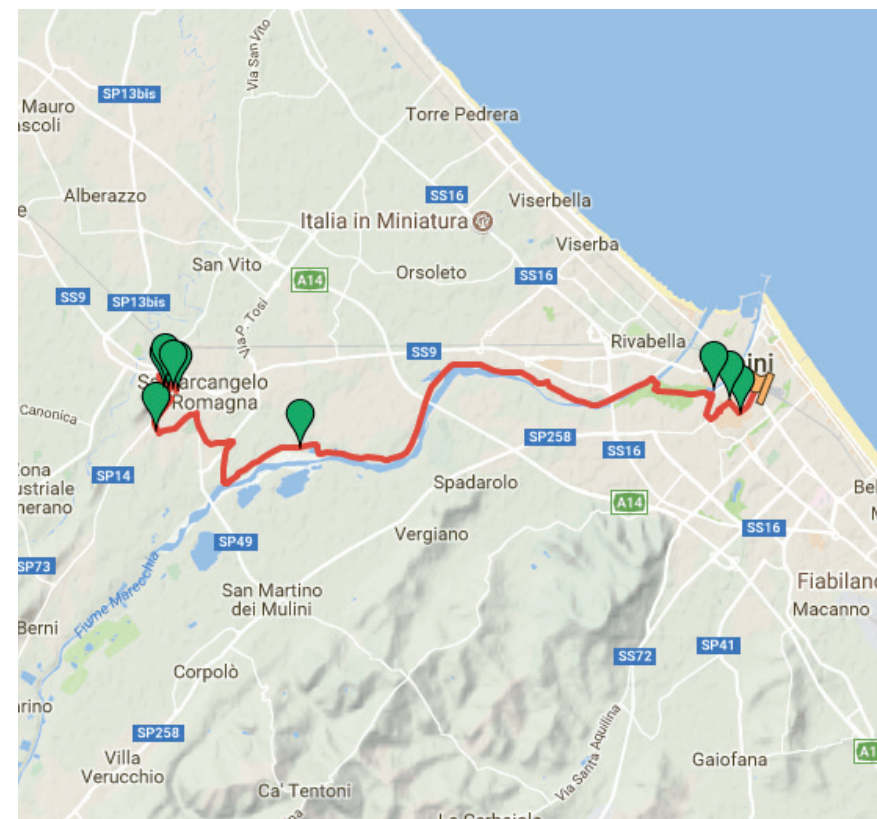
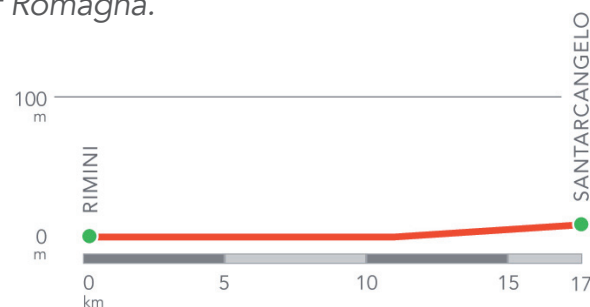
ROMAGNA SLOW BIKE HOLIDAYS  
OFFROAD

Moving up the Marecchia river and the homonymous valley, along the peaceful cycling path which from the heart of Rimini, following the river, reaches the ridges of the Emilia-Romagna and Tuscan Appennines. Green hills and cultivated countryside alternate to the fortresses of the Malatesta Seignory from which the view over a wonderful landscape can be enjoyed, amid the sea and the mounts. The closest municipality to Rimini is Santarcangelo di Romagna, a small town which has preserved a very refined historical centre, comprising ancient buildings, staircases, typical workshops and an amazing network of underground tufa caves. A short and easy route rich in historical and cultural content.

**Not to be missed:** from the suggestive Roman remains in Rimini to the medieval ones in Santarcangelo in a few kilometres, a short but great journey through the history (and not only) of Romagna.

## INFO

km: 17  
difference in altitude: flat land  
bike: trekking bike  
track: unmade roads, cycling paths, asphalt.



## PLACES OF INTEREST

**Rimini:** The Malatesta Temple, The Surgeon's House, The Tiberius Bridge  
**Santarcangelo:** Valmarecchia, St. Michael the Archangel Parish Church, The Butterfly Fountain, Mangano press dating back to 1633, Tufa caves, Ganganeli Arch, Piadina Romagnola IGP



SELECTBIKEHOTELS



SELECTHOTELS.IT





# CANCELLINO - LA LAMA

ROMAGNA SLOW BIKE HOLIDAYS  
OFFROAD

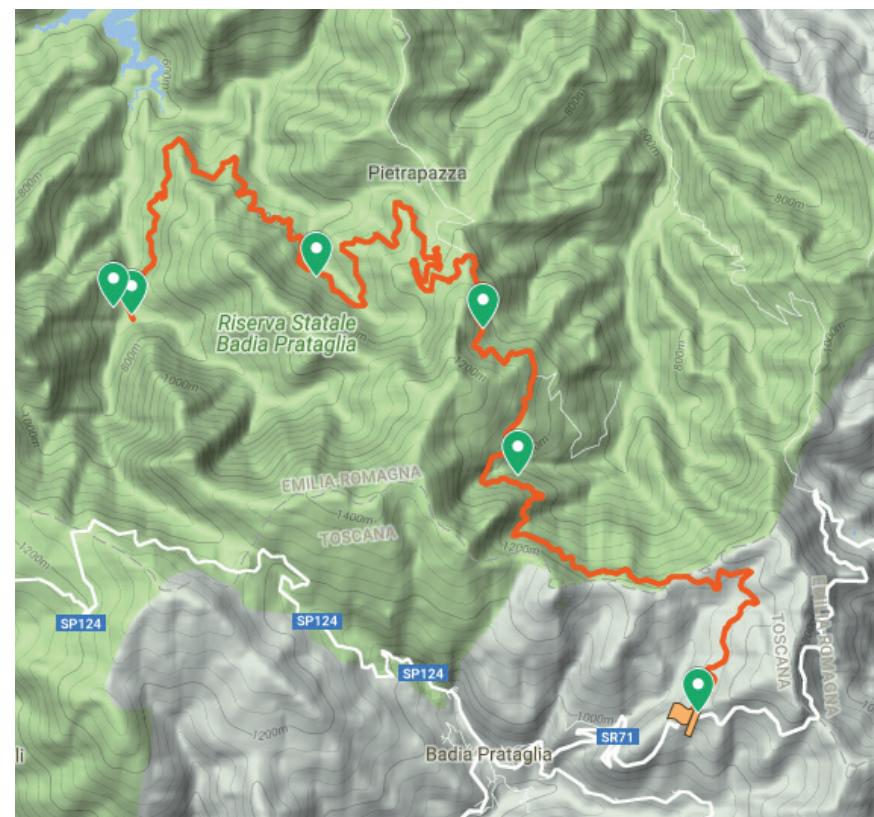
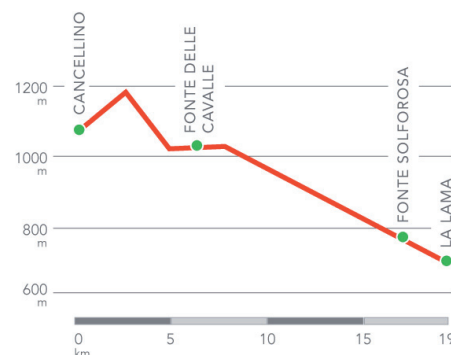
In the heart of the Casentinesi Forest Park, the itinerary faithfully repropose the course of a Decauville railway, in use in the past century for deforestation and wood transport. A short and technically very easy route on a still finely conserved track, suitable for everyone despite the altitude and the conformation of the land. The return journey will follow the same itinerary.

## **Not to be missed:**

*after a short bike ride you can access the hundred-year-old beechwoods in the Park in an unspoilt environment where to feel all the power of undamaged nature. The Lama plateau the naturalistic heart of the Park, can be reached with very little effort.*

### INFO

km: 19  
difference in altitude: 450 mt  
bike: trekking bike  
track: unmade roads, cycling paths, asphalt.



## PLACES OF INTEREST

**The Casentinesi Forest National Park:**  
**Bagno di Romagna:**

Alta Via dei Parchi, Ancient Beechwoods, la Lama, Sasso Fratino Integral Reserve  
The Mandrioli track



SELECTBIKEHOTELS



SELECTHOTELS.IT

  
**WellnessValley**  
ROMAGNA BENESSERE®



# ROMAGNA SLOW BIKE HOLIDAYS

ROAD



[www.selecthotels.it](http://www.selecthotels.it)  
[bike@selecthotels.it](mailto:bike@selecthotels.it)  
+39 0544 977071





# RIMINI - SAN LEO

ROMAGNA SLOW BIKE HOLIDAYS  
ROAD

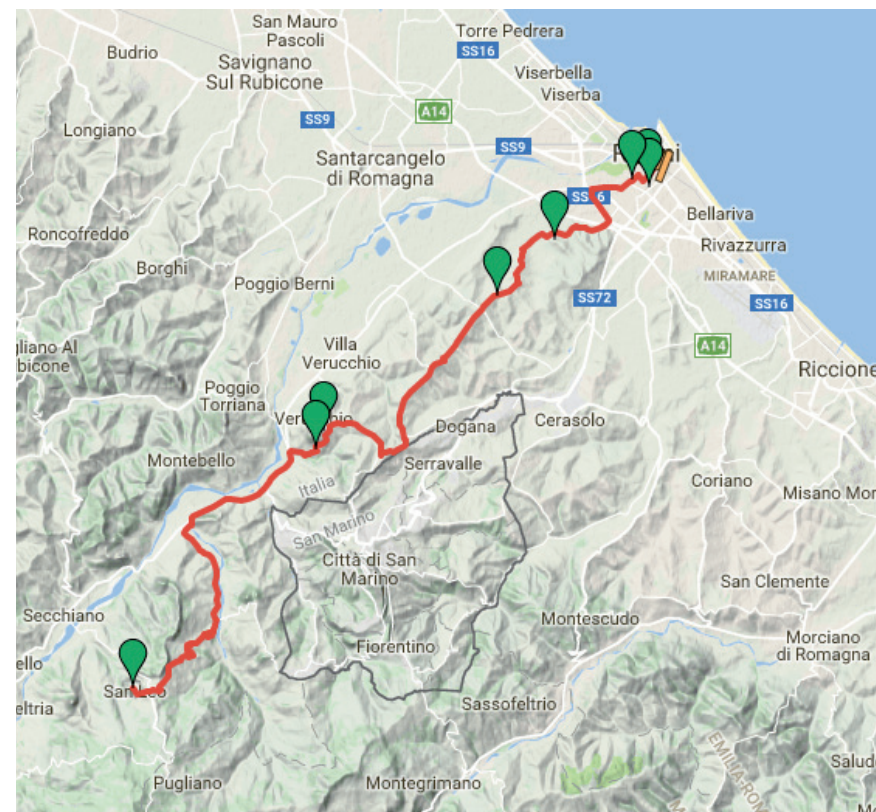
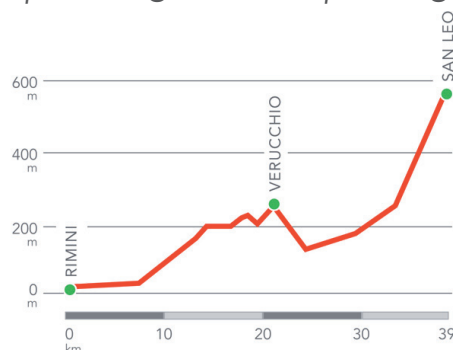
Right next to Covignano, the closest hill to the town, a series of gentle ups and downs leads to the town of Verucchio, the "cradle" of the Malatesta family, with its art and wine. After this first rich stop which is worth a visit, and following a descent to the heart of Valmarecchia, a longer though continual road winds uphill through to the bastion of San Leo. Situated on an enormous, impassable rock it can only be accessed through a road carved into the rock. An itinerary for refined palates, for taste and bike lovers.

## **Not to be missed:**

*moving uphill towards San Leo, the valleys and corners of Valmarecchia offer a journey through time. Just like pedalling inside a painting by Piero della Francesca.*

### INFO

km: 39  
difference in altitude: 880 mt  
bici: road bike  
track: tarred road



## PLACES OF INTEREST

**Rimini:** The Malatesta Temple, Arch of August, Sismondo Castle

**Valmarecchia:** The Parish Church of San Lorenzo in Monte, Verucchio, Wine and taste Colli di Rimini, Cà Brigida WWF Oasis, San Leo



SELECTBIKEHOTELS



SELECTHOTELS.IT



# CESENATICO - SOGLIANO TOUR

ROMAGNA SLOW BIKE HOLIDAYS  
ROAD

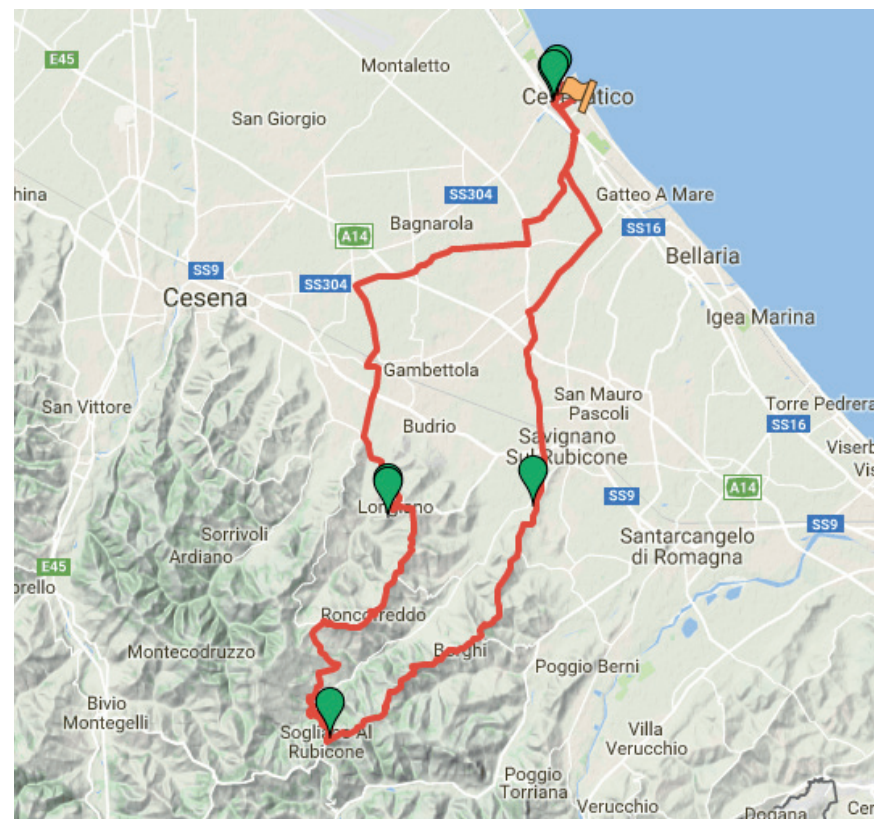
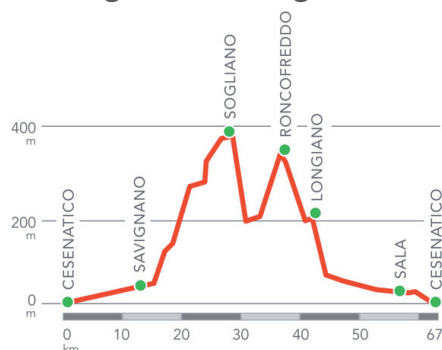
Three hills are enlivened by the three towns proposed by this itinerary which fairly distributes its charm among nature, history and gastronomy. A sea breeze accompanies the gentle uphill slope to the village of Sogliano al Rubicone. Following an encounter with the local speciality - Fossa cheese – we will continue downhill to the Rubicone valley to “conquer” the Longiano hill, with panoramic views over the Riviera. A long ride across the valley will “loosen your legs” before arriving at the conclusion of the route, after a day going uphill.

## **Not to be missed:**

*the range of themes proposed, the history, enogastronomy, culture, framed by spectacular views and panoramas, gives an insight into what Romagna can offer to its visitors.*

### INFO

km: 66,5  
difference in altitude: 610 mt  
bike: road bike  
track: asphalt



## PLACES OF INTEREST

**Cesenatico:** The Leonardo da Vinci canal Harbour, The Maritime Museum, Moretti's House

**Sogliano:** Fossa cheese, The Wine Route in Forlì and Cesena

**Longiano:** The Malatesta Castle and Balestra Foundation, The Museum of the Territory



SELECTBIKEHOTELS



SELECTHOTELS.IT





# BAGNO DI ROMAGNA - BALZE TOUR

ROMAGNA SLOW BIKE HOLIDAYS  
ROAD

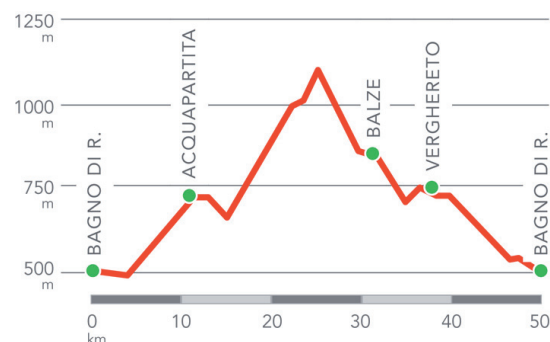
A panoramic itinerary, in the area where three regions meet: Emilia Romagna, Tuscany and Marche. Amid ridges and beech woods, along the slopes of Mount Fumaiolo, we will go past the springs of the Tevere river, which after 4 kilometres in the territory of Romagna crosses Tuscany, Umbria and Latium to flow into the Tyrrhenian Sea, after a route of 406 kilometres.

## **Not to be missed:**

*though travelling on asphalted roads, the route mostly covers wild environments and luxuriant nature.*

### INFO

km: 50  
difference in altitude: 1250 mt  
bike: road bike  
track: asphalt



## PLACES OF INTEREST

### **Bagno di Romagna:**

Palazzo del Capitano (the Captain's Palace), Foreste Casentinesi National Park, the Primitivo Apiculture, Natural thermal baths, Lake Acquapartita, Alfero Waterfalls, Springs of the Tevere river



SELECTBIKEHOTELS



SELECTHOTELS.IT



# CERVIA - LONGIANO TOUR

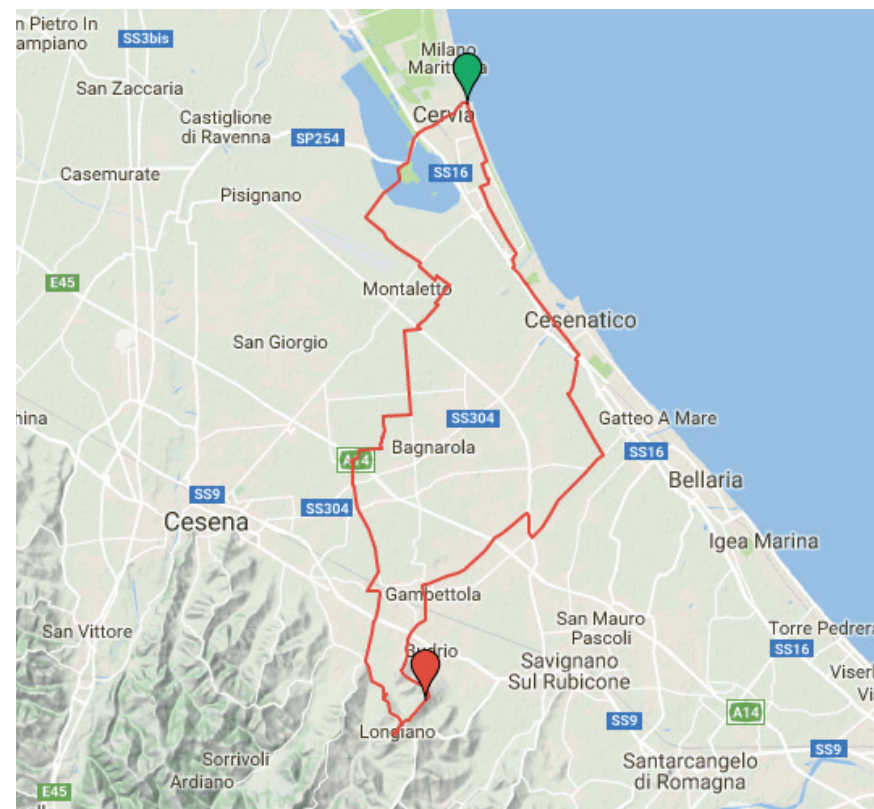
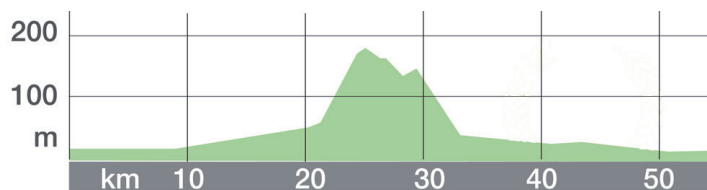
ROMAGNA SLOW BIKE HOLIDAYS  
ROAD

This panoramic tour departs from the Riviera and lets you discover the olive trees growing alongside the sea. Leaving Cervia, crossing the Etruscan salt ponds, where you might see the particular bird life, including the pink flamingos.

In the immediate inlands we cross the ancient centuriations, a narrow network of country roads immersed in nature; a legacy of the ancient Roman road tracks. Longiano is located in the early hillside and offers a splendid view over the entire Adriatic coast from Rimini to the Ravenna beaches. Returning to Cervia, the itinerary passes Cesenatico, crossing the ancient canal projected by Leonardo Da Vinci, which has also made the small sea town famous. If you have some time left over, you may want to visit the Maritime Museum; the only floating museum in Italy.

## INFO

km: 59  
difference in altitude: 200 mt  
bike: road bike  
track: asphalt



## PLACES OF INTEREST

**Cervia:** Salt Museum, Salt Warehouses, Cervia Saltpans

**Longiano:** The Malatesta Castle and Balestra Foundation, The Museum of the Territory, Old Oil Mill Turchi

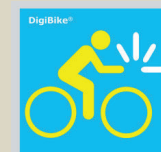
**Cesenatico:** The Leonardo da Vinci canal Harbour, The Maritime Museum, Moretti's House, Spazio Pantani



SELECTBIKEHOTELS



SELECTHOTELS.IT





# FAENZA - BRISIGHELLA TOUR

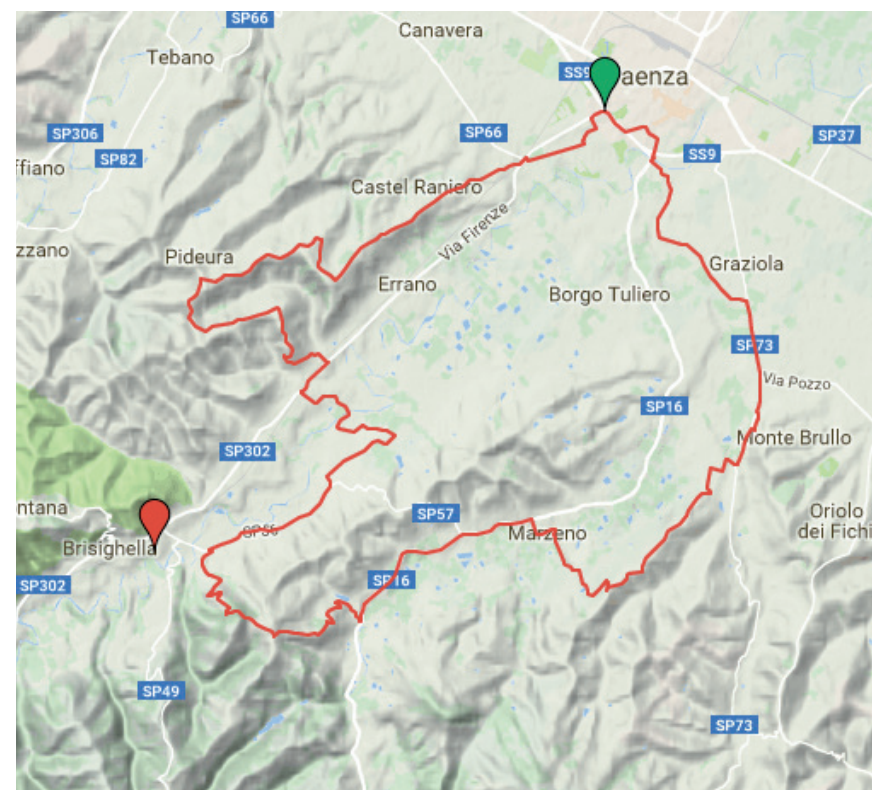
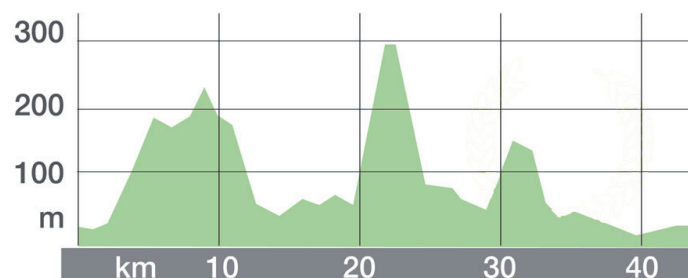
ROMAGNA SLOW BIKE HOLIDAYS  
ROAD

An itinerary of limited length but with great landscape variety. We start from the city of ceramics and after a few kilometers we will be surrounded completely by the magic of the peaceful Romagna hills.

The route runs along roads without traffic, with gentle undulation a part from a few short passages with steeper climbs. After passing through the "Parco della Vena del Gesso Romagnola (chalk ridge), you arrive in Brisighella. Enjoy a walk through the medieval streets, and see the ancient porticoes. Here, you'll find the famous "Donkey's Road", an elevated road with some very characteristic windows, arched, of different widths. Just outside the village you may visit the open air Olive Oil museum, and maybe enjoy a tasting.

## INFO

km: 42,5  
difference in altitude: 750 mt  
bike: road bike  
track: asphalt



## PLACES OF INTEREST

**Faenza:** The Ceramics Museum, Milzetti Pala

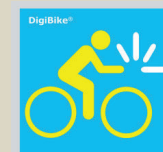
**Brisighella:** Vena del Gesso Regional Park, Wine and dine in Faenza, Outdoor Olive-oil Museum



SELECTBIKEHOTELS



SELECTHOTELS.IT





# ITALIAN STYLE TOURS & EXPERIENCES

- slow and e-bike riding
- **Maremonti** cycling week
- ladies trail
- individuals & group







# LUXURY IS STANDARD, IN THE HOTEL

- the only 5 star bike hotel on the Adriatic Riviera
- bike holiday specialist & planner
- bike room
- bike holiday specialist & planner
- welcome meeting
- top quality food with “0 km” raw materials directly from the **Batani Farm**





# LUXURY IS STANDARD, ON YOUR BIKE

- local guides, well-informed and passionate about their territory
- itineraries with great variation: lowlands, hillside, mountain, on- and off road
- personalized, guided tours
- GPS tracks and bike navigator for individual tours
- specialists and assistance for bicycle and e-bike rent
- pick-up bike retrieval and transfer





THE PERFECT EXPERIENCE *Batani*

